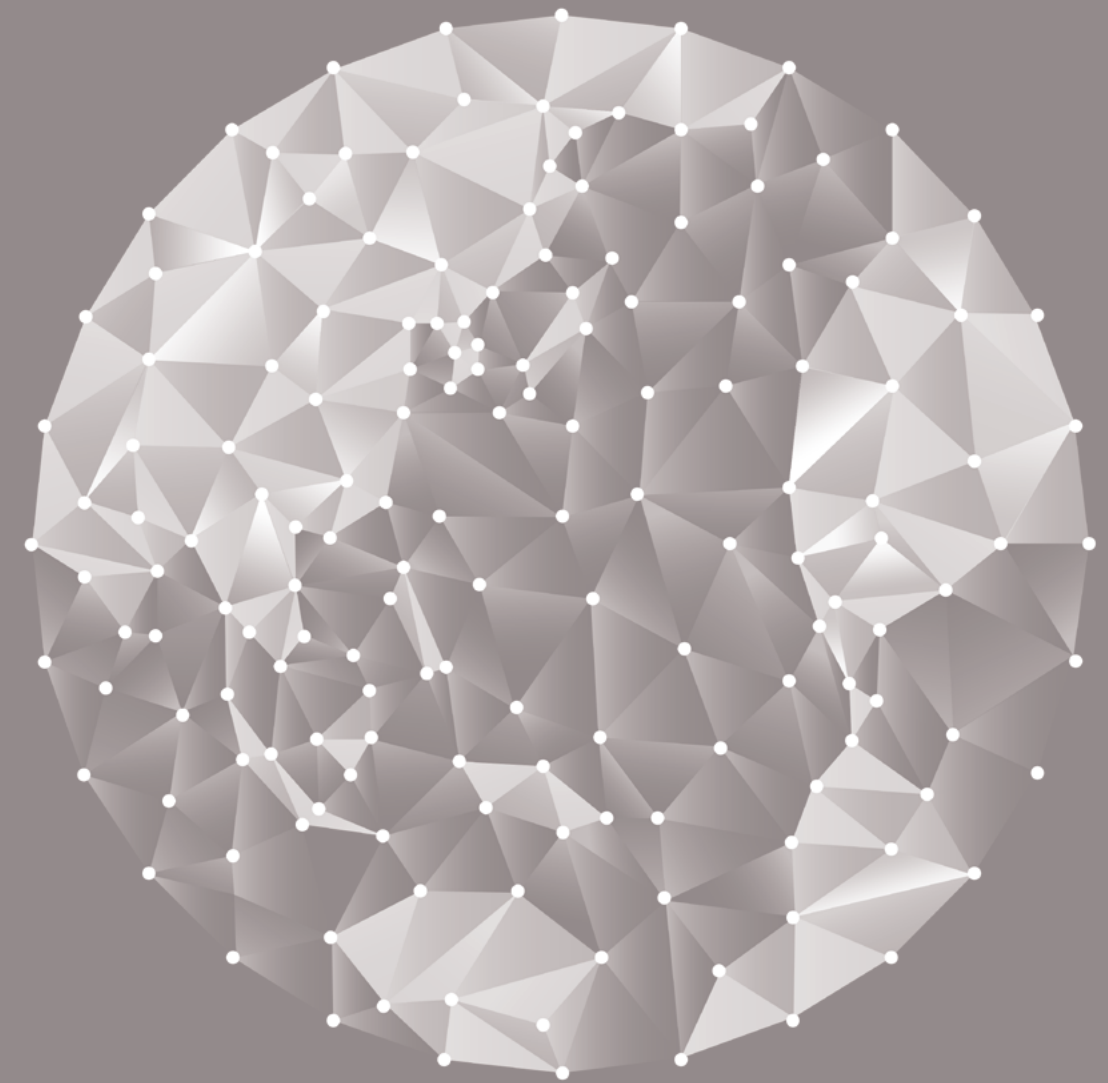


GDPC

Global Development
Partnership Center



254 Simin-daero, Dongan-gu, Anyang-si, Gyeonggi-do, 14067, Korea
Tel. 82-31-380-0114 Fax. 82-31-380-0470
eng.krihs.re.kr (ENG) / www.krihs.re.kr (KOR)
www.gdpc.kr (ENG)



02 President's Message

04 Korea Research Institute for Human Settlements

06 Global Development Partnership Center

08 Capacity Building Program

10 Planning and Policy Analysis

12 Knowledge Exchange 1: Visiting Scholar Program

14 Knowledge Exchange 2: Workshop & Seminar

16 Support for International Cooperation by Korean Institutions and Businesses

18 Collaborations with International Organizations

20 Global Network

22 Publications

23 Websites

Global Development Partnership Center



1st Prize, KRIHS Beautiful National Territory Photo Contest (2013)
Title: The Beautiful Nightscape of Busan, Korea



President's Message

Founded in 1978, Korea Research Institute for Human Settlements (KRIHS) has made significant contributions to policies in national territorial planning, regional planning, urban planning, real estate, transport and infrastructure, and the urban environment.

KRIHS is committed to conducting high-quality policy-oriented research through which to promote economic development and to enhance the welfare of people.

National territory represents the space for production, consumption, recreational activities, and social interaction, which directly affect the quality of life and the competitiveness of businesses and regions.

As Korea passes the phase of rapid growth and enters a mature stage of stable development, the happiness of people is becoming an essential social value. It is in this context that KRIHS has set the goal of pursuing research that can help improve the quality of life, create decent jobs, and realize the creative economy. We also aim at strengthening our efforts to share our research outcomes with the public.

KRIHS is staffed with experts in various subjects of human settlements with rich experiences. It has also accumulated valuable data and information in these subject areas. As such, it is uniquely positioned to conduct cross-cutting research by engaging relevant in-house experts. With a strong sense of responsibility and shared vision, our staff is dedicated to interdisciplinary and collaborative research to maximize our potential. We also plan to expand and strengthen our network with domestic and overseas partners and to share our knowledge and experience with other countries.

We look forward to serving our nation and the international community.

Dongju Kim

President, Korea Research Institute for Human Settlements

Dongju Kim

Korea Research Institute for Human Settlements

Major Research Areas

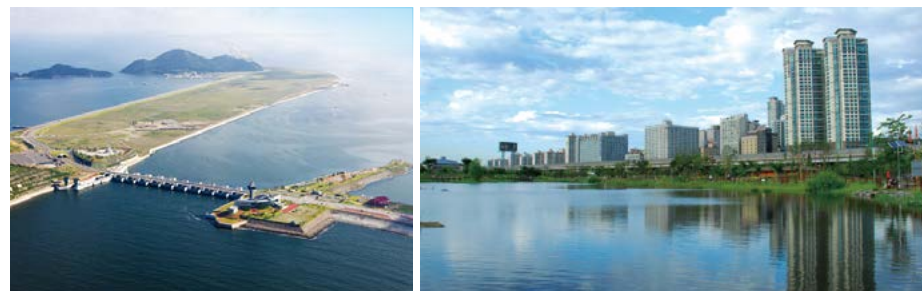
National Territorial Planning & Regional Research Division



Main research areas include: national & regional planning and policy, capital region assessment, national planning system, territorial monitoring and projection, regional economic analysis, and industrial location analysis.

Research Performance:

- Future Prospects and Strategies for National Territorial Development (III)
- A Study on the Examination and Application of the Regional Resilience for Sustainable Development
- Mixed-use Development of Industrial Complexes by Strengthening Innovation and Living Environments



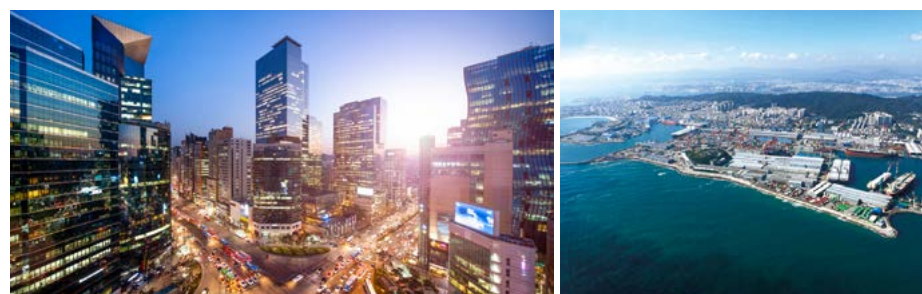
Urban Research Division



Main research areas include: urban planning and design for both rich and convenient urban settlement and infrastructure, urban regeneration and development to enhance dynamism and competitiveness of the cities, and urban disaster prevention to mitigate the impacts of climate change and natural disaster.

Research Performance:

- Rebuilding Intermediary Organizations for Urban Regeneration in Korea: Government Civil Society Relation Perspective
- Devising Urban Master Plan in the Age of Slow Population Growth
- Supporting Platform for the Analysis of Climate Change Driven Disaster Vulnerability in Urban Area



Housing & Land Research Division



Main research areas include: real estate market analysis, comprehensive housing plan, management and development of land policies, and evaluation of construction economy.

Research Performance:

- Developing Housing Welfare Indices
- Establishing the Policy for Public Land Supply System in Post-Developmental Era
- Enhancing Cooperative Business Ecosystem in Construction Industry



Infrastructure Research Division



Major research areas include: the formulation of transportation policies to support national and regional development, primary road and railroad network planning, and standardization of intelligent transport systems.

Research Performance:

- Study on Mid- and Long-term Plan Establishment for National Highways (Phase I, II)
- Direction of Transportation Policies Corresponding to the Megatrends



Geospatial Information Research Performance



Major research areas include: the policies of national spatial data infrastructures, development & improvement of methods for collecting, producing, and analyzing geospatial information.

Research Performance:

- Development and Utilization of Spatial Knowledge Platform for Scientific Territorial Planning
- Development and Application for a Model for Integrating Geographical and Statistical Information



Global Development Partnership Center

Mission & Function

To contribute to shared prosperity of the world through capacity building program, planning & policy analysis, and knowledge exchange.



History

2010. 12

GDPC was established as a strategic control tower for international cooperation on urban and regional development as Korea joined the OECD's DAC* in 2010

2011. 06

Designated as the UKP* Academy as a key partner in the WB's Urban Knowledge Platform

2012. 10

Hosted the 23rd World EAROPH* Congress in Daegu, Korea with 22 member countries and more than 300 urban experts from all around the world

2012. 11

Jointly hosted the 1st KRIHS-WB Annual Workshop in Washington, D.C., USA

2013. 04

Hosted KRIHS-OECD Workshop on Compact City for the launch of 2013 Korean Edition of OECD Urban Policy Reviews of Korea

2013. 06

Launched the 1st KRIHS-George Washington University Joint Workshop for Sustainable Urban Planning in Korea

2013. 11

Co-hosted the 1st KRIHS-IDB Annual Workshop in Washington, D.C., USA

2013. 12

Jointly held ADB-KRIHS Integrated Urban Planning Workshop in Manila, Philippines

2014. 04

Co-hosted 2014 Global Lab on Metropolitan Strategic Planning: Seoul Global Exchange with Seoul Metropolitan Government and WB

2014. 12

Launched the 1st KRIHS-WB Urban Development and Municipal Capacity Building Program

2015. 07

Organized KRIHS-IDB Urban Development Academy (KIUDA) for High Level Officials from LACs*

2015. 12

Launched the 1st UN-Habitat Conference in Incheon, Korea (The Future of National Urban Policy: Towards Smarter and Greener Cities)

*DAC: Development Assistance Committee
 UKP: Urban Knowledge Platform
 EAROPH: Eastern Regional Organization for Planning & Human Settlements
 LACs: Latin America and Caribbean Countries



2012.10



2013.11



2014.04



2015.07



Capacity Building Program

GDFC offers capacity building programs in cooperation with international organizations such as the World Bank, Inter-American Development Bank and Asian Development Bank focusing on the specialized areas of KRIHS. The program combines lectures, workshops and site visits to meet the needs of participants.

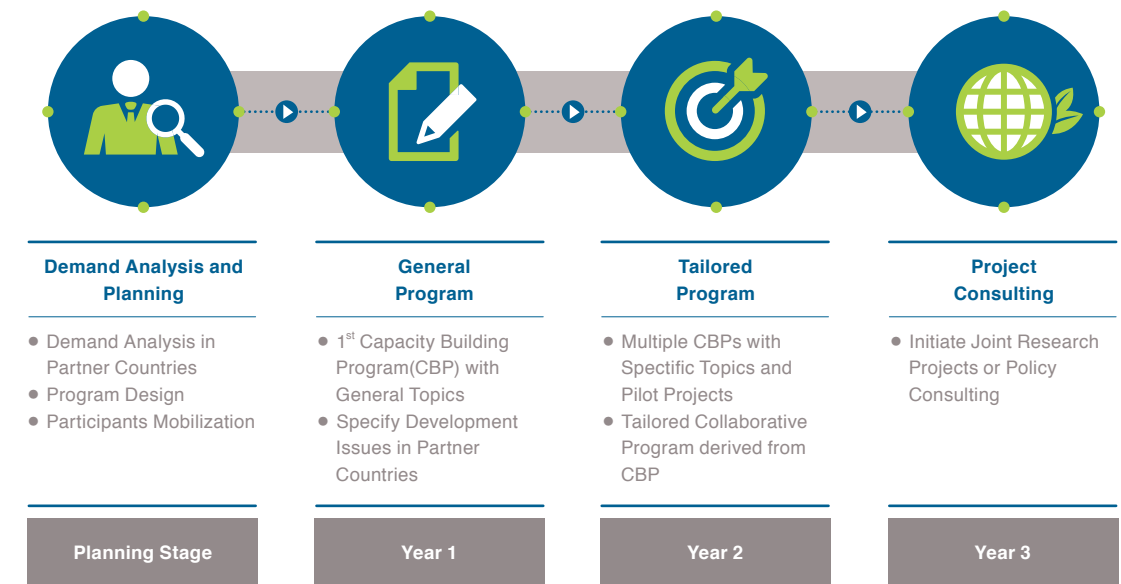
Key Programs Offered

- KRIHS-IDB Urban Development Capacity Building Program (KIUDA, since 2014, multi-year program)
- National Territorial and Regional Development Policies for Sustainable Development of Three Emerging Countries (2013-2015, KOICA's multi-year program)
- 2015 KRIHS-WB Knowledge Exchange Program (Land & Housing, Metropolitan Management) (2015)
- Capacity Building Program for GIS-based Smart & Green Urban Infrastructure (2014)



Multi-Year Capacity Building Program

GDFC seeks to conduct multi-year capacity building program to promote joint research projects with MDBs and Korean government through CIAT: Capacity Improvement and Advancement for Tomorrow (KOICA's multi-year program) and KIUDA: KRIHS-IDB Urban Development Academy (IDB's multi-year program).



Planning and Policy Analysis



GDPC provides bilateral technical assistance to partner countries through research, planning, and policy analysis. It conducts ODA projects such as Knowledge Sharing Program and joint research projects with the Korean government and MDBs.

Knowledge Sharing Program for Construction and Infrastructure Development

Projects run by GDPC include:

- Urban Planning Strategies for the Hong River Banks in Hanoi: Thang Long Bridge-Long Bien Bridge Section (2015)
- Consultation on the Legal and Institutional Improvement and Supporting Regional Policy for Nuclear Power Plants in Vietnam (2015)
- Policy Consultation on the Korea-Myanmar Economic Cooperative Industrial Complex (2015)
- Policy Consultation on Green Urban Infrastructure Development: Focusing on Solid Waste Management in Sri Lanka (2015)
- Development Plan for Eastern Mumbai Metropolitan Region (2014)

Joint Research Project with MDBs

Projects run by GDPC include:

- [IDB-KRIHS] International Case Studies of Smart Cities (2015)
- [WB-KRIHS] Development of a Smart City Approach for the Model Cities under the Tamil Nadu Sustainable Urban Development Project (TNSUDP), India (2015)
- [IDB-KRIHS] Analysis of Experiences in Sustainable Cities for Korea-LAC Knowledge Exchange Forum on Development Experiences (2015)
- [WB-KRIHS] Development of an Incremental and Affordable Housing Policy Toolkit and Pilot City Case Studies (2014)
- [ADB-KRIHS] High Level Policy Advisory Program for the Mongolian People's Republic "Land Acquisition and Resettlements" (2012)



Knowledge Exchange 1: Visiting Scholar Program

Visiting Fellow Program

Since operation in 2011, GDPC Visiting Fellow Program (2-4 weeks in duration) aims at fostering a global network of specialists from international organizations, academic institutes and ministries from around the world. Through the program, participants conduct research in related fields and share their findings with specialists from KRIHS and other agencies in Korea.

Programs run by GDPC include:

Name	Project	Country	Affiliation
Vidyadhar Phatak	Development Plan for Eastern Mumbai Metropolitan Region	India	Mumbai Metropolitan Region Development Authority
Manfred Kuhn	Study on Development Models of Major Cities in the North and Practical Strategies for Inter-Korean Cooperation to Build a Strong Foundation for Reunification	Germany	Institute for Regional Development and Structural Planning
Arnaldo Samaniego Gozales	Policy Consultation with High-level Officials from Paraguay	Paraguay	Asuncion City Government
Andy Hong	Health Impact of Transit-Oriented Development in Seoul and Los Angeles	USA	University of Southern California
Allison Garland			Woodrow Wilson International Center for Scholars
Kaye Brubaker	Research on the Development of Policies to Enhance Urban Resiliences	USA	University of Maryland
Patrick S. Roberts			Virginia Polytechnic Institute and State University



Special Lectures

Special lectures serve as a channel that the world's renowned scholars share their expertise in the field of territory and infrastructure. Distinguished scholars provide cutting-edge research outcomes and most successful strategies proven in advanced countries.

Selected lectures include:

Year	Name	Affiliation	Lecture
2015	John Byrne	Energy and Climate Policy Center for Energy & Environmental Policy, University of Delaware (USA)	Synergistic Strategy for Governing and Financing Green Cities
2015	Marlon Boanet	University of Southern California (USA)	How to Measure Health Impact of Rail Transit: An Analytical Framework
2014	Masahisa Fujita	Research Institute of Economy, Trade and Industry (Japan)	The Evolution of Asian-Pacific Spatial Economy: History and Cooperation
2014	Paul Romer	Stern School of Business, New York University (USA)	Managing Urban Expansion – Coping and Managing Strategies for Urban Expansion in Advanced and Developing Nations
2014	Eugenie L. Birch	Institute of Urban Research, University of Pennsylvania (USA)	UN Sustainable Development Goals





Knowledge Exchange 2: Workshop and Seminar

Policy Workshops

GDPC holds short-term workshops for high-level and working-level officials from partner countries with international organizations. This program aims to share Korea's development experiences and to draw policy implications.

Programs run by GDPC include:

- KRIHS-UN-Habitat Seminar on National Urban Policy (2015)
- KRIHS Urban Renewal and Public Housing Workshop with Mexican Officials and WB Staff Members (2014)
- KRIHS-PSRC (Policy Study and Research Centre) of Ethiopia Workshop on Urban Development Policy (2014)
- KRIHS Korean Territorial Planning and Policy Workshop for Government Officials from Indonesia (2014)



Academic Seminars

GDPC exchanges knowledge with overseas academic and research institutes through academic seminars to advance research capacity. Seminars would contribute to expanding academic achievement and to leading global research.

Programs run by GDPC include:

- KRIHS-Southern California Association of Governments (SCAG) Knowledge Sharing Seminar on National Territorial Development (2015)
- KRIHS-Columbia University (GSAPP) Joint Seminar on Urban Regeneration Knowledge Exchange Seminar (2015)
- KRIHS-University of Pennsylvania Urban Development Seminar (since 2014)
- KRIHS-George Washington University Sustainable Urban Development Seminar (since 2013)



Support for International Cooperation by Korean Institutions and Businesses

Global Development Partnership Forum

To accelerate exchange of information between domestic and external experts, GDPC has hosted a monthly forum since 2011 with the objectives of (i) encouraging professionals to build a strong network, (ii) facilitating exchanges and cooperation between the public and the private sector, (iii) assisting public agencies and businesses make inroads into global markets.

Topics covered by GDP Forums include:

- Business Opportunities with the World Bank (41st forum, 2015)
- How to Promote Overseas Urban Development Project (40th forum, 2015)
- Business Opportunities for the Infrastructure Development in Colombia (30th forum, 2014)
- The Current State of Global Partnership Projects and Tasks for Sustainable Development (28th Forum, 2014)



Seminars to Strengthen Capacity for Overseas Entry

GDPC holds seminars to support Korean institutions and corporations strengthen their international cooperation capacity. The seminar topics cover laws, regulations, and finance which are requisites for Korean institutions and businesses to advance into overseas.

Topics covered by Seminars include:

- Vietnam Construction Law 2014 and Other Regulations in Relation to Foreign Investment in Construction (2014)
- 7th Overseas Development Financing Forum: Current and Future Status (2014)
- Participation and Activation Strategy for Overseas Development Finance Project (2013)
- Participation Strategy in Multilateral Development Bank (MDB) Financed Procurement Projects (2012)



Collaboration with International Organizations

GDPC is a committed core partner with the world's renowned organizations including the World Bank, Inter-American Development Bank, Asian Development Bank, and UN-Habitat. It has established triangular partnership with international organizations and developing countries to share knowledge and disseminate experiences in territorial development. In addition to training sessions and visiting fellow programs, GDPC coordinates joint research projects with international organizations. With these efforts, it will continue to build a solid network and contribute to sustainable development of the global community.



Training & Education

In cooperation with international organizations, GDPC operates capacity building programs for public officials and experts from partner countries. The programs are specially tailored to the needs of each partner country, not only assisting participants enhance their individual capacities but also offering several alternatives for related field.

Highlighted Programs organized by GDPC

- KRIHS-WB Municipal Capacity Building Programs for South Asian Countries (since 2014)
- KRIHS-IDB Urban Development Academy Programs (KIUDA, since 2014, focusing on land and housing issues)

Joint Research

GDPC conducts policy consultations for participant countries to address the issues they are facing in cooperation with international organizations. With territorial development expertise, KRIHS provides tailored consultations to partner countries in connection with their socio-economic situations.

Major Research Projects

- KSP-IDB Joint Activities for Sustainable Emerging Cities (2011-2014)
- WB-KRIHS Joint Consulting Programs for Developing Countries (since 2013)



Workshop & Seminar

GDPC holds annual workshops and seminars with the international organizations to exchange knowledge and share recent issues on national territorial development planning.

Major Events

- KRIHS-UN-Habitat Seminar on National Urban Policy (since 2015)
- KRIHS-IDB Annual Workshop (held at the IDB HQ, Washington D.C., USA, since 2013)
- KRIHS-WB Annual Workshop (held at the WB HQ, Washington D.C., USA, since 2012)

Visiting Scholar Program

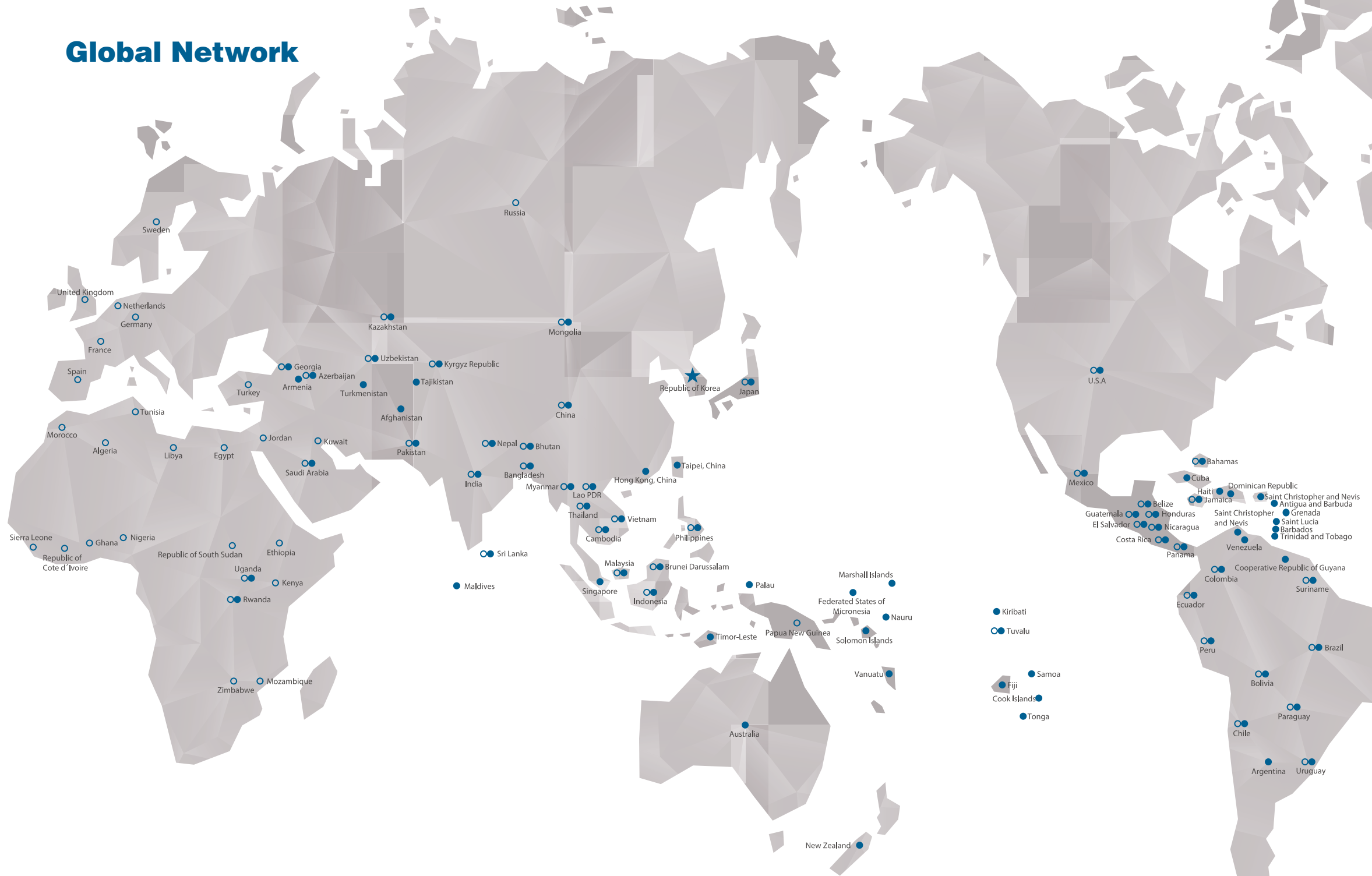
GDPC invites specialists and researchers from developing countries to share experiences in the nation's rapid economic growth and territorial development and to draw corresponding policy implications through comparison and contrast.

Highlights: KRIHS-IDB Visiting Scholar Program

Visiting scholars from LAC countries

- [Brazil] New Towns in South Korea: Limits and Possibilities for Implementation in Sprawl Area
- [Colombia] Exploring the Economy-Wide Impacts of Urban Renewal Projects in Bogota
- [Colombia] Land Readjustment in Urban Renewal Project: Lessons from South Korea's Experience
- [Colombia] An Empirical Approach to Land Monopoly
- [Peru] Policies on Land and Housing: Comparative Study of Peru, Colombia, and South Korea

Global Network



● **Policy Consultation Network:**
35 policy consultation projects,
87 countries

○ **Human Network:**
935 capacity building program participants
58 countries

MOU Affiliations with KRIHS

- ### INTERNATIONAL ORGANIZATIONS
- USA** ● The World Bank Group (WB)
 - Inter-American Development Bank (IDB)
 - PHILIPPINES** ● Asian Development Bank (ADB)
 - MALAYSIA** ● Eastern Regional Organization for Planning & Human Settlements (EAROPH)

- ### RESEARCH INSTITUTES
- NETHERLANDS** ● International New Town Institute (INTI)
 - RUSSIA** ● Far Eastern Marine Research, Design and Technology Institute
 - MONGOLIA** ● Design and Research Institute (DRI)
 - USA** ● Southern California Association of Governments (SCAG)
 - Penn Institute for Urban Research (PennIUR, University of Pennsylvania)
 - Woodrow Wilson International Center for Scholars
 - VIETNAM** ● Vietnam Institute of Architecture, Urban and Rural Planning
 - Vietnam Urban Planning and Development Association (VUPDA)
 - Academy of Managers for Construction and Cities (AMC)
 - JAPAN** ● Research Institute for Humanity and Nature (RIHN)
 - National Institute for Land and Infrastructure Management (NILIM)
 - CHINA** ● China Land Surveying and Planning Institute
 - KAZAKHSTAN** ● JSC (Joint Stock Company) Economic Research Institute
 - National Information Technologies JSC

- ### UNIVERSITIES
- GERMANY** ● HafenCity University Hamburg
 - RUSSIA** ● Far Eastern Federal University
 - Maritime State University
 - USA** ● University of Washington, Seattle
 - University of Maryland, College Park
 - University of Southern California
 - VIETNAM** ● Hanoi Architectural University
 - UK** ● University College London
 - EGYPT** ● Cairo University
 - JAPAN** ● Hiroshima University
 - University of Tsukuba
 - University of Tokyo
 - CHINA** ● Zhejiang University
 - KAZAKHSTAN** ● Eurasian National University

- ### MINISTRIES & PUBLIC ORGANIZATIONS
- MYANMAR** ● The Ministry of National Planning and Economic Development
 - VIETNAM** ● Vietnam Urban Planning and Development Association (VUPDA)
 - Ministry of Natural Resources and Environment (MONRE)
 - SRI LANKA** ● The Ministry of Defence and Urban Development
 - EGYPT** ● General Organization for Physical Planning
 - PARAGUAY** ● Municipalidad de Asunción
 - COLOMBIA** ● Financiera de Desarrollo Territorial (FINDETER)

Publications

In order to better share its expertise in land, region, city and other infrastructure development, GDPC offers a wide range of publications in English. KRIHS English publications listed below can be found and downloaded by visiting KRIHS and GDPC English website. www.gdpc.kr or eng.krihs.re.kr



Space & Environment

Space & Environment, first published on April 30, 1993, is a quarterly English magazine intended to disseminate research outputs and international activities of KRIHS.



Special Report

Special Report, an English digest of KRIHS research reports, is intended to help interested scholars and policy makers outside Korea better understand key urban and regional issues in Korea.



A Primer on Korean Planning and Policy (PKPP)

A Primer on Korean Planning and Policy (PKPP) aims to share the knowledge and experiences of Korea in territorial planning and policy accumulated over the past 60 years.



Technical Research Papers

Technical Research Papers are intended to show how Korean policies were applied and implicated during the development era.

Websites



eng.krihs.re.kr



www.gdpc.kr

4th Prize, KRIHS Beautiful National Territory Photo Contest (2013)
Title: The Sunset of Michuhol in Incheon, Korea